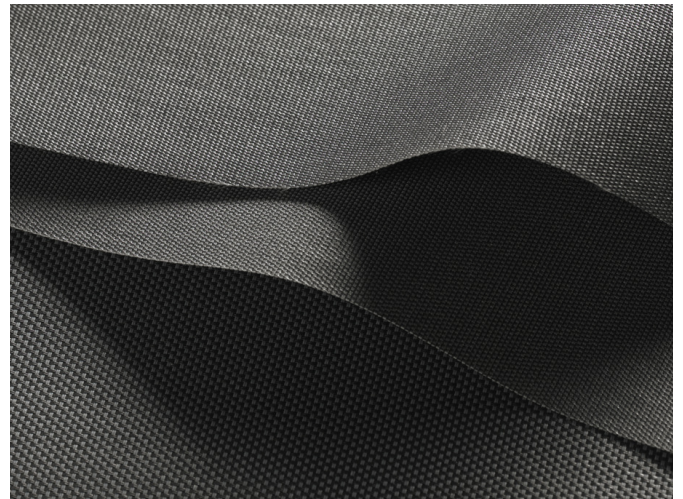
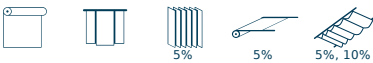








MULTISCREEN 1%, 5%, 10%

- Screen-Stoff für ideale Regulierung des Tageslichts und gleichzeitiger Blendschutz
- 3 Öffnungsfaktoren für optimale Lichtkontrolle auf die Gebäudeausrichtung abgestimmt
- Greenguard®-Zertifizierung für emissionsarme Produkte

ANWENDUNGEN



GEWEBEHINWEISE

	1%	5%	10%
	Halbtransparent		
	64% PVC, 36% Glasfaser		
	440 g/m ²	410 g/m ²	350 g/m ²
	0.55 mm	0.55 mm	0.47 mm
	← max. → 315 cm		
	250 cm, 320 cm	8.9 cm, 12.7 cm, 250 cm, 320 cm	250 cm, 320 cm

EIGENSCHAFTEN / TECHNISCHE MERKMALE

	7-8
	Schwerentflammbar
	Optimiert für Bildschirmarbeitsplatz
	Verschiedene Öffnungsfaktoren
	Feuchtraumgeeignet
	Digitaldruck
	Greenguard
	Spezialfarben ab 10'000 m
	Schweissbar

PFLEGEHINWEISE



BRANDSCHUTZ

C-s3,d0 (EN 13501-1)
 Class 1 (BS 476)
 Class 1 (UNI 9176/77)
 B1 (DIN 4102-1)
 M1 (NF P 92-503/5/7)
 Type B (BS 5867-2)
 NFPA 701



Multiscreen 1%, 5%, 10%
OPTISCHE UND SOLAR-KENNZAHLEN ($\pm 5\%$, DIN EN 410)

Multiscreen 1%							
Farbe	T_V	T_s	R_s	A_s	T_{UV}	F_C	g_{tot}
0702	11.8	14.0	47.0	39.0	0.00	0.64	0.46
0730	5.6	6.0	25.0	69.0	0.01	0.79	0.57
3001	2.8	3.0	9.0	88.0	0.01	0.89	0.64

Multiscreen 5%							
Farbe	T_V	T_s	R_s	A_s	T_{UV}	F_C	g_{tot}
0202	20.6	21.0	69.0	10.0	0.05	0.50	0.36
0207	15.8	17.0	54.0	29.0	0.05	0.60	0.42
0220	19.1	22.0	62.0	16.0	0.06	0.54	0.39
0707	12.7	15.0	37.0	48.0	0.06	0.71	0.50
3001	5.6	6.0	10.0	84.0	0.05	0.89	0.62
3006	5.3	5.0	7.0	88.0	0.06	0.89	0.63
3030	5.4	6.0	5.0	89.0	0.04	0.89	0.64

Multiscreen 10%							
Farbe	T_V	T_s	R_s	A_s	T_{UV}	F_C	g_{tot}
0202	28.7	29.0	63.0	8.0	0.11	0.54	0.39
0207	23.2	25.0	53.0	22.0	0.11	0.61	0.44
0220	26.4	29.0	58.0	13.0	0.10	0.57	0.41
0707	18.3	21.0	34.0	45.0	0.11	0.74	0.53
3001	10.2	10.0	10.0	80.0	0.10	0.89	0.64
3006	9.3	10.0	6.0	84.0	0.12	0.89	0.64
3030	10.8	10.0	5.0	85.0	0.10	0.89	0.64

 T_V Lichttransmission

 R_s Strahlungsreflexion

 T_{UV} UV-Transmission

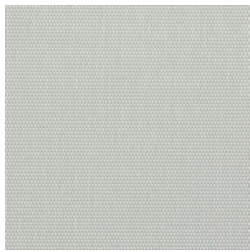
 g_{tot} Gesamt g-Wert

 T_s Strahlungstransmission

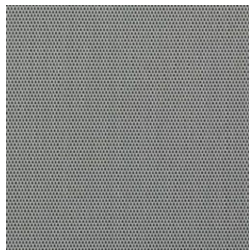
 A_s Strahlungsabsorption

 F_C Abminderungsfaktor

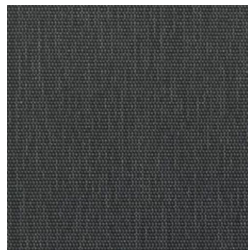
 $F_C + g_{tot}$: Wert errechnet mit Glas: $0.72 / U_g = 1.6 \text{ W/m}^2 \text{ K}$, DIN EN 13363-1

Multiscreen 1%, 5%, 10%

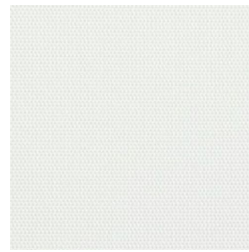
0702 (1%)



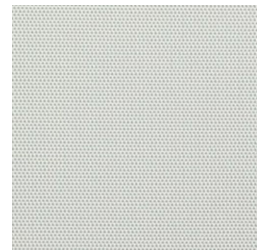
0730 (1%)



3001 (1%)



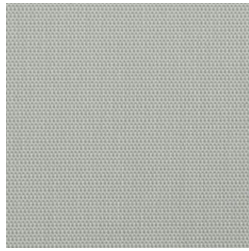
0202 (5%)



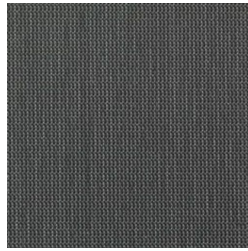
0207 (5%)



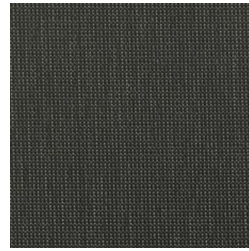
0220 (5%)



0707 (5%)



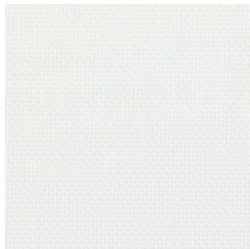
3001 (5%)



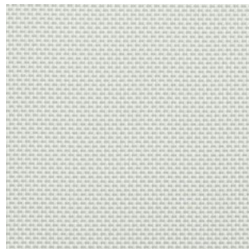
3006 (5%)



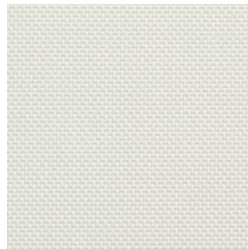
3030 (5%)



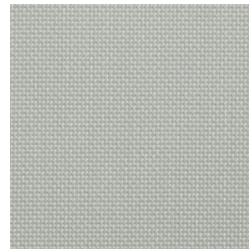
0202 (10%)



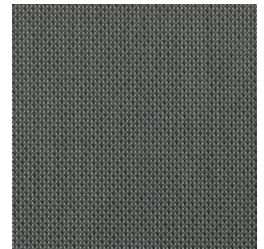
0207 (10%)



0220 (10%)



0707 (10%)



3001 (10%)



3006 (10%)



3030 (10%)

Dargestellte Farben sind nicht verbindlich